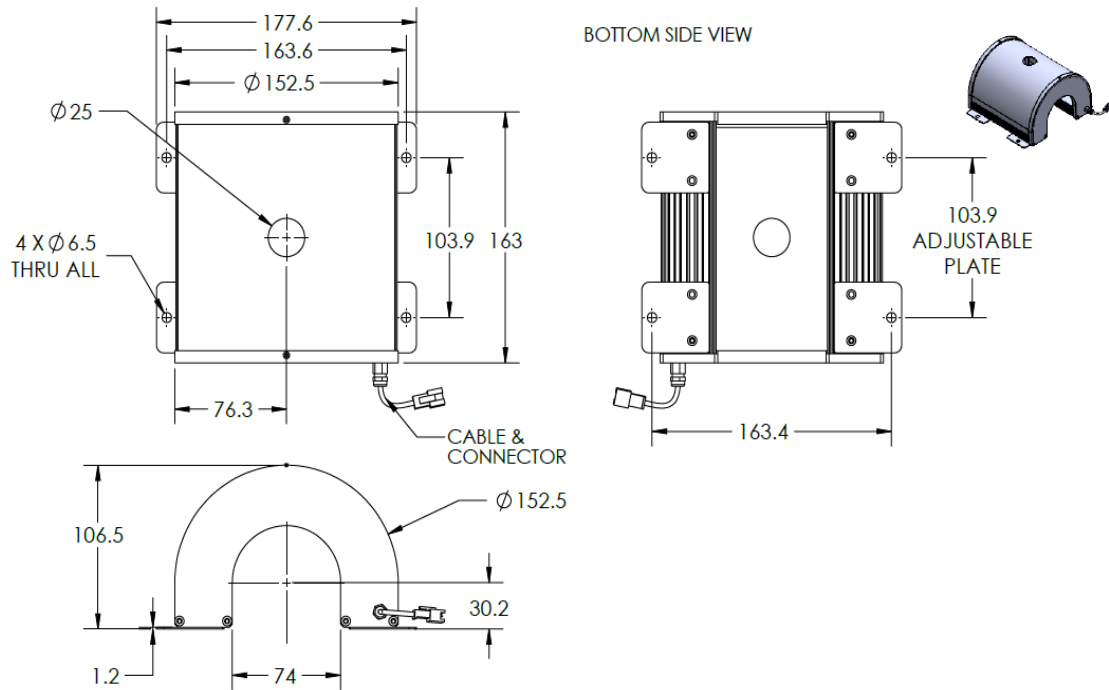


LT3WRH150-00-1-W-24V


Lighting Dimension



Mechanical Information	
Casing Material	Aluminium
Storage Temperature Range	Temp 0 - 45°C, Humidity 20-85%
Weight	530 g
Length / Outer Diameter	163 mm
Width / Inner Diameter	177.6 mm
Thickness/Height	106.5 mm

ILLUMINATOR DATA - ID

LT3WRH150-00-1-W-24V

Optical Information																															
Part Number		LT3WRH150-00-1-W-24V																													
LED Color		WHITE																													
Wavelength	(nm)	* Refer to the Chromaticity Table Below																													
Intensity (±15%)	(Lux)	TBA			TBA			TBA																							
Working Distance	(mm)	40			50			60																							
Illumination (number of row)		1																													
Illumination Active Area																															
Active Length / Outer Dia.	(mm)	147																													
Active Width / Inner Dia.		76																													
Emission angle	(deg.)	0																													
Eye Safety Class (IEC62471)		EXEMPT																													
*CHROMATICITY TABLE																															
		<table><tr><td>X</td><td>0.296</td><td>0.287</td><td>0.307</td><td>0.311</td></tr><tr><td>Y</td><td>0.276</td><td>0.295</td><td>0.315</td><td>0.294</td></tr></table>					X	0.296	0.287	0.307	0.311	Y	0.276	0.295	0.315	0.294	<table><tr><td>X</td><td>0.311</td><td>0.307</td><td>0.33</td><td>0.33</td></tr><tr><td>Y</td><td>0.294</td><td>0.315</td><td>0.339</td><td>0.318</td></tr></table>					X	0.311	0.307	0.33	0.33	Y	0.294	0.315	0.339	0.318
X	0.296	0.287	0.307	0.311																											
Y	0.276	0.295	0.315	0.294																											
X	0.311	0.307	0.33	0.33																											
Y	0.294	0.315	0.339	0.318																											
Electrical Information																															
Lighting Supply Voltage (constant voltage mode)		24V ± 2%																													
Continuous Current	(mA)	400																													
Power Consumption	(W)	9.6																													
Lighting casing temperature, Operating after 60 minutes	°C	TBA																													
Strobe Mode Specification																															
Pulse Operation		YES																													
Max. Lighting Supply Voltage (Constant voltage power supply)	(V)	Pulsing at 24VDC to 48VDC, 0-10% Duty Cycle Recommended at 36VDC																													
Pulse Current, (Max. 10msec) (Constant current power supply)	(mA)	1200																													
Max. Trigger Pulse Duration	(msec)	10																													
Duty Cycle		0-10%																													
Additional Information																															
Additional Cooling Method		Attached to machine part for better heat dissipation																													
Intensity Controller Selection		ANGX, ST, SD and SDA series																													
CE Conformity		YES																													
RoHS Compliance		YES																													
Connection																															
Connector Type (Default):		JST SMR-03V																													
Cable Length out from lighting :	(mm)	500																													
Pin Configuration :		Pin			Signal			Cable Color																							
		1			LED +			RED																							
		2			N.C.			---																							
		3			LED -			WHITE																							
																															
Application																															
Illumination Type		Indirect Illumination																													
Application Use		Crack, chip, stains and mark on cylindrical surface or shafts.																													